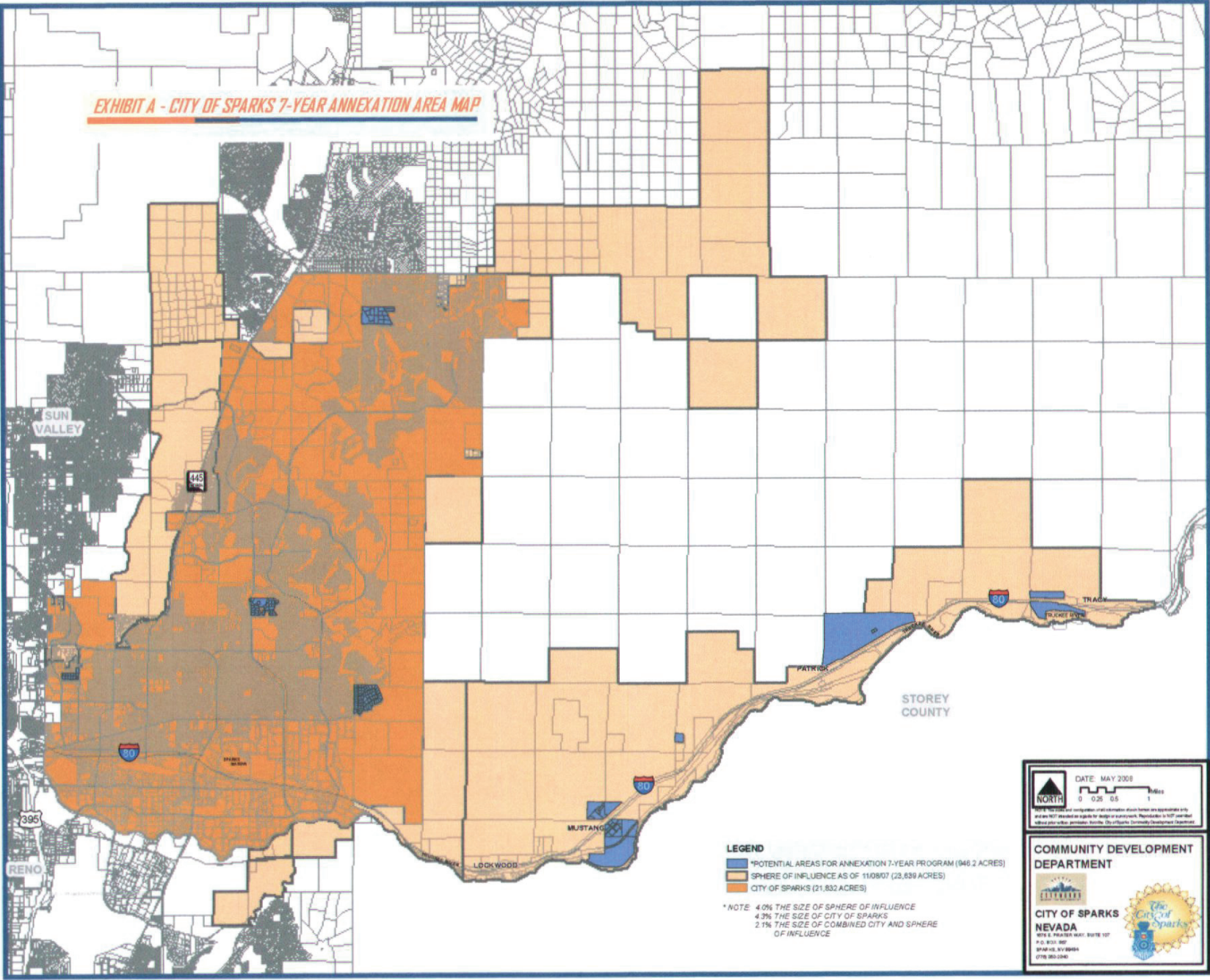


**EXHIBIT A - CITY OF SPARKS 7-YEAR ANNEXATION AREA MAP**



- LEGEND**
- \*POTENTIAL AREAS FOR ANNEXATION 7-YEAR PROGRAM (946.2 ACRES)
  - SPHERE OF INFLUENCE AS OF 11/08/07 (23,639 ACRES)
  - CITY OF SPARKS (21,832 ACRES)

\* NOTE 40% THE SIZE OF SPHERE OF INFLUENCE  
 43% THE SIZE OF CITY OF SPARKS  
 21% THE SIZE OF COMBINED CITY AND SPHERE OF INFLUENCE

DATE: MAY 2008

**NORTH** 0 0.25 0.5 1 Miles

\*NOTE: This report and map are for informational purposes only and are NOT intended as a guide for design or construction. Reproduction is NOT permitted without prior written permission. Nevada State University Community Development Department.

**COMMUNITY DEVELOPMENT DEPARTMENT**

**CITY OF SPARKS**  
 NEVADA  
 976 E. PEARSON WAY, SUITE 107  
 P.O. BOX 867  
 SPARKS, NV 89444  
 775.350.2340